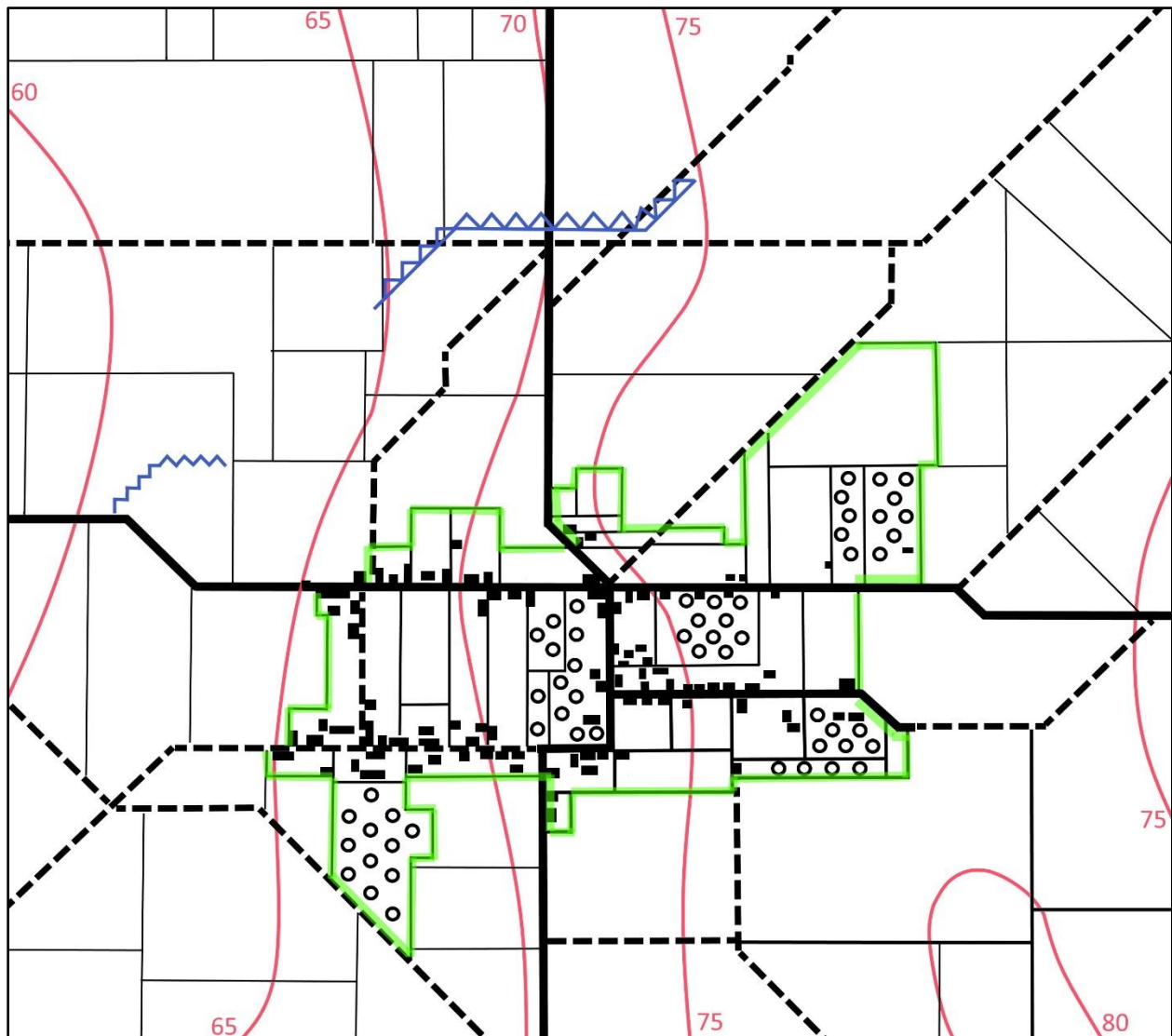


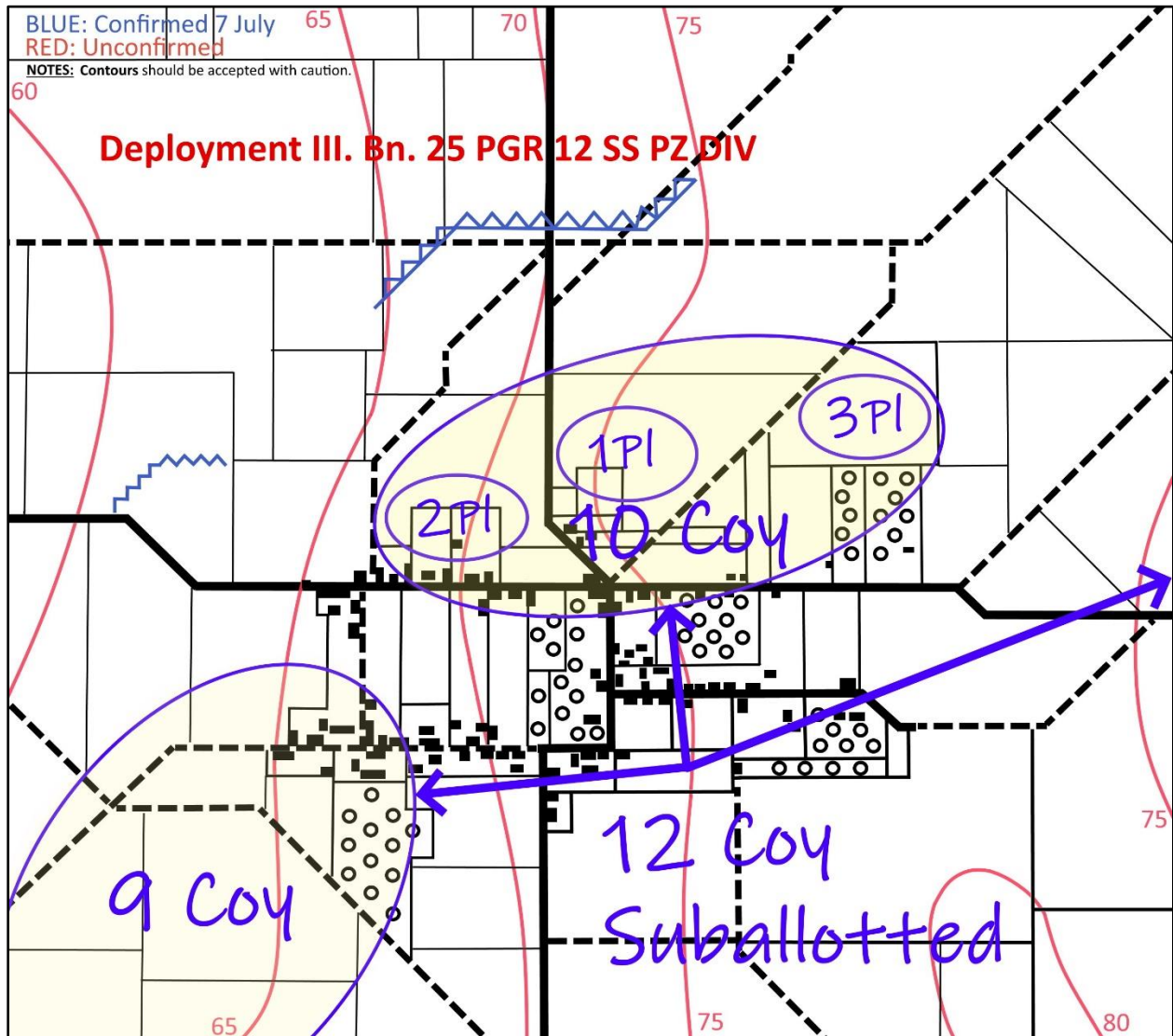
OPERATION CHARNWOOD

COPY: COMMANDING OFFICER, HIGHLAND LIGHT INFANTRY OF CANADA



NOTES

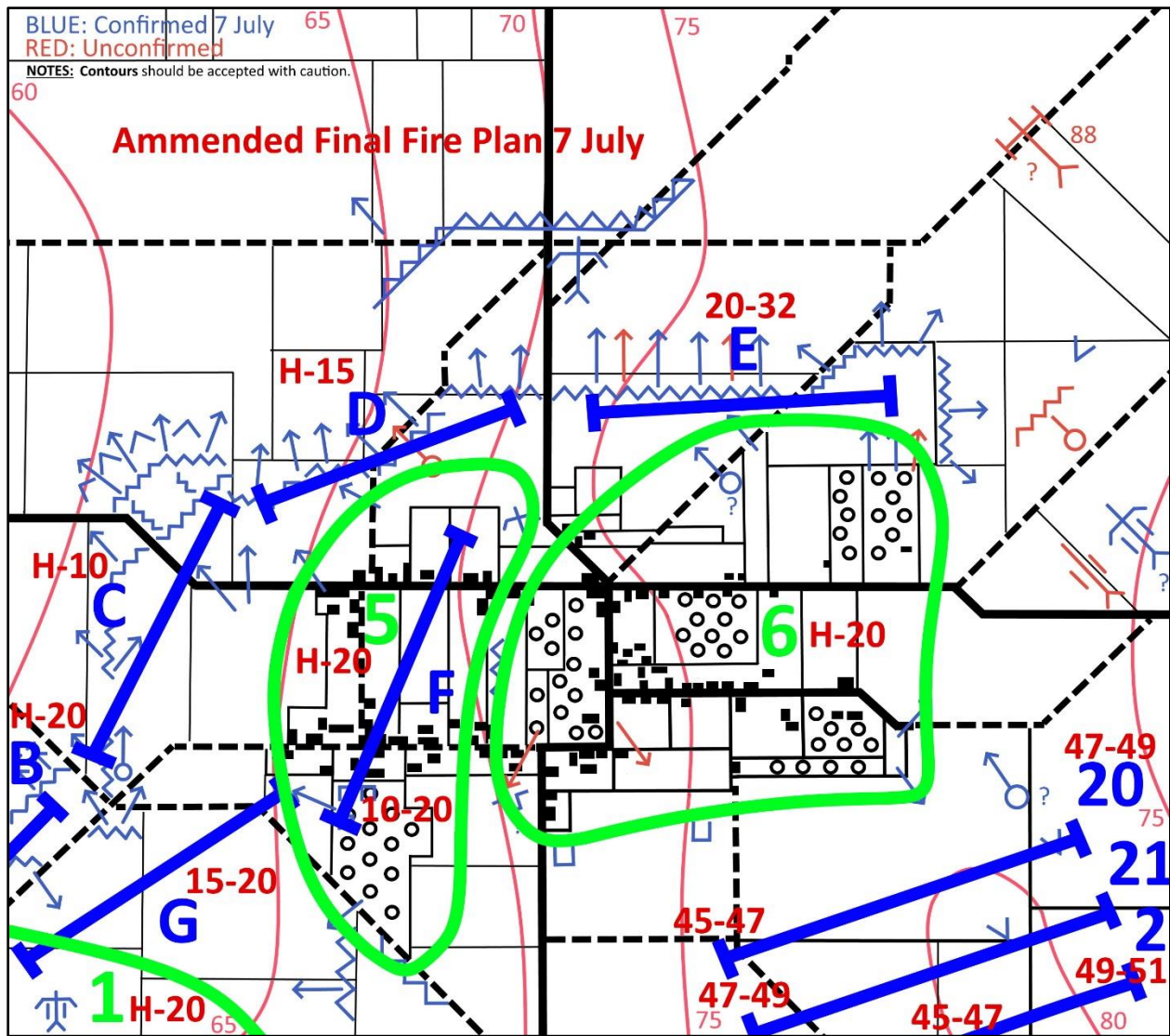
- 1) Road Classification is based on Michelin and other classification. It has not been checked on the ground and its reliability is uncertain.
- 2) Contours are at 10 m.V.I. They are interpolated from spot heights and hachures on the French 1:80:000 and amplified from air Photo-Examination. They should be **accepted with caution**.



SOURCES

1. Air Photo-Examination,
2. PW Zimmat, 2 Pl., 10 Coy., III. SS PGR.

FIRE PLAN AMENDED 7 JULY



(scenario) FINAL FIRE PLAN

7 June 1944

Phase I, Step One

(codename)

<u>Time</u>	<u>Support</u>	<u>Task</u>
H to H+20	One Field Regt	b
H to H+10	One Field Regt	c
H to H+15	One Field Regt	d
H+20 to H+32	One Field Regt	e
H+10 to H+20	One Field Regt	f
H+15 to H+20	One Field Regt	g
H to H+20	Two Meds	1
H to H+20	One Med	5
H to H+20	One Med	6
H+45 to H+47	Two Btys on each of One Field Regt	20, 22
H+47 to H+49	Two Btys on each of One Field Regt	21, 23
H+49 to H+51	Two Btys of One Field Regt	22
H+51 to H+53	One Bty of One Field Regt	23

19 Field Arty Regt in direct support of HLI of C throughout.

Scenario Note The fire plan detailed above is the historical amended final version of 7 July 1944 and shows ONLY those shoots covered within the bounds of the scenario map and timeframe.

9 CDN INF BDE O O No 4

INTENTION

3. 9 Cdn Inf Bde will capture GRUCHY 9772, BURON 9972, CHATEAU DE ST LOUET 9771 - AUTHIE 9871 and exploit to FRANQUEVILLE 9770 and line railway BAYEUX - CAEN.

METHOD

4. Preliminary Action

Before 9 Cdn Inf Bde attacks 197 Br Inf Bde will capture GALMANCHE 0173.

5. 9 Cdn Inf Bde Op will be divided in 3 Parts

Part I - Move fwd in conjunction with 197 Br Inf Bde on left and capture of GRUCHY and BURON

Part II - Capture of CHATEAU DE ST LOUET 977714 and AUTHIE 9871.

PART III - Re-organization and exploitation to FRANQUEVILLE and railway BAYEUX - CAEN.

6. (a) Right

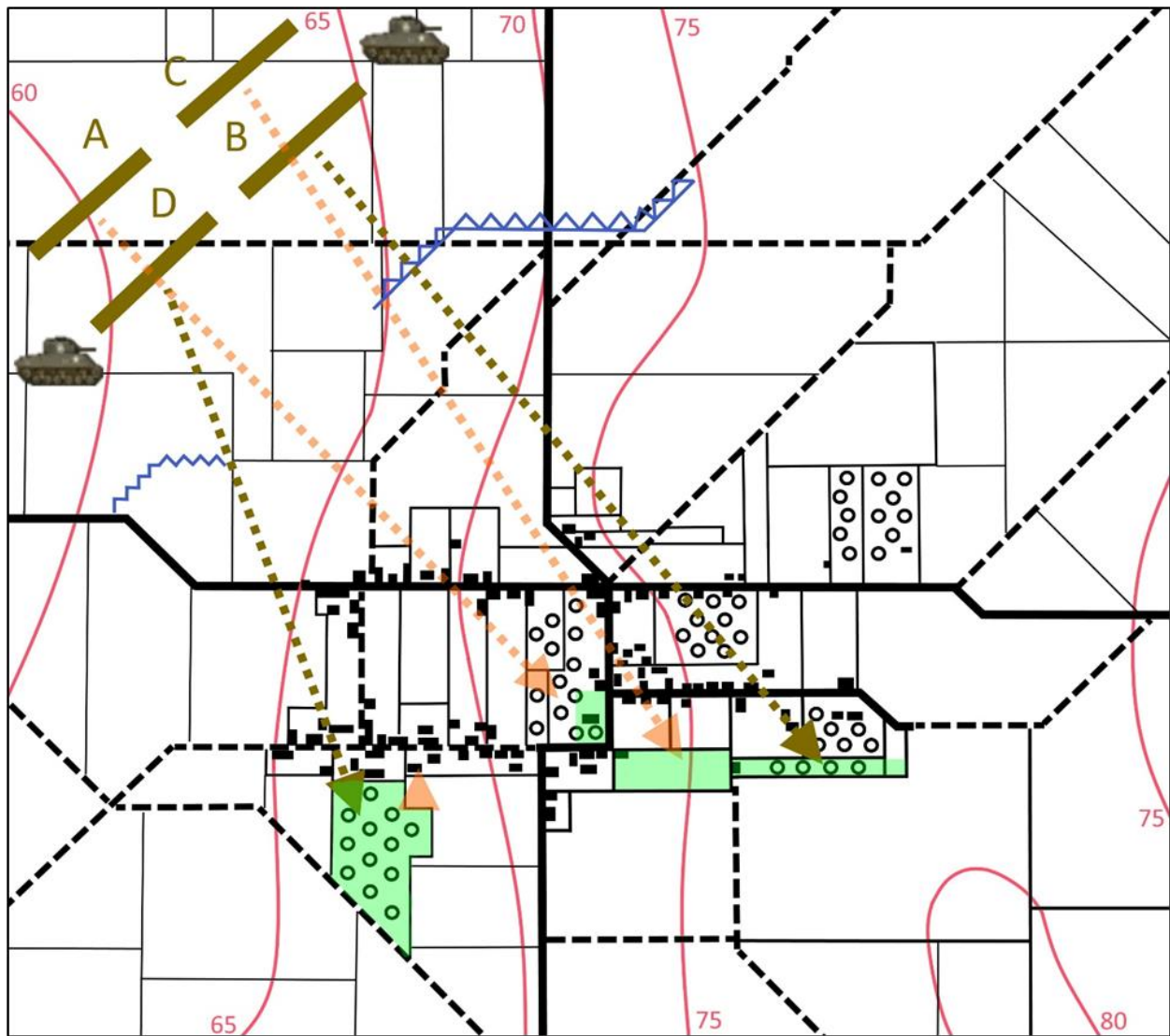
SD & G Highrs with in sp
B Sqn 27 Cdn Armd Regt (Sher Fus) and att tps
191 Fd Arty RA
94 Cdn A Tk Bty (less one 6 pdr Tp)
Two ?ece 15 Cdn Fd Coy RCE
One Contact Det

will attack and capture GRUCHY

7. (b) Left

HLI of C with in sp
A Sqn 27 Cdn Armd Regt (Sher Fus) and att tps
19 Cdn Fd Regt RCA
245 A Tk Bty RA (less one tp)
One 6 pdr tp 94 Cdn A Tk Bty RCA
Two ?ece 15 Cdn Fd Coy RCE
One Contact Det

will attack and capture BURON 9972 and high ground 80 ring contour 9971 SOUTH of BURON.



CODE WORDS

3 CDN INF DIV AREA (FOODS)

- | | |
|----------------------|-----------|
| GRUCHY 9872 | - FLOUR |
| BURON 9972 | - CAKE |
| AUTHIE 9871 | - MEAT |
| 80 RING CONTOUR 9971 | - TREACLE |

59 DIV AREA (BOYS NAMES)

- | | |
|-----------------|--------|
| GALMANCHE 0173 | - BILL |
| ST CONTEST 0072 | -PERCY |

BLOODY BURON WEST END SCENARIO MAP

